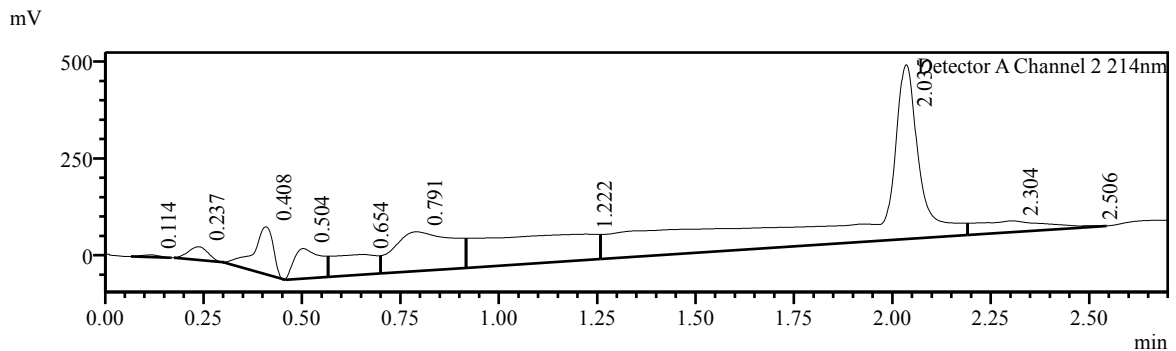
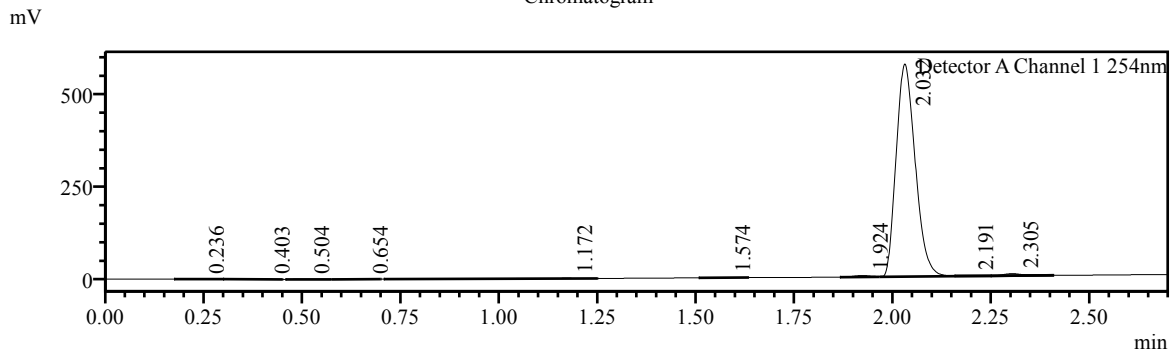


LCMS Report

Acquired by : Shimadzu LCMS D
 Date Acquired : 2017/7/8 17:19:14
 Sample Name : 1570496-34-2
 Tray# : 1
 Vial# : 21
 Injection Volume : 2
 Data File : 1570496-34-2.lcd
 Method File : P1-10-1.5ML.lcm
 Original Method : P1-10-1.5ML.lcm
 Report Format : DEFAULT.lsr
 Tuning File : 20170622.lct

Chromatogram



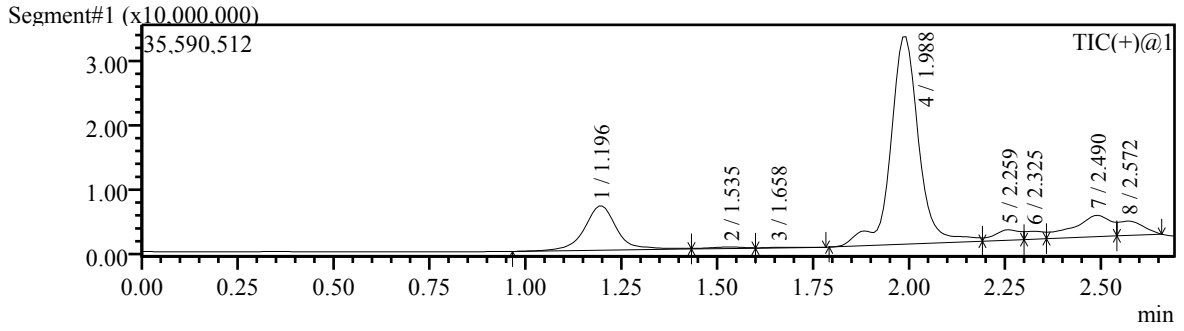
Peak Table

Detector A Channel 1 254nm								
Peak#	Ret. Time	Area	Height	Conc.	Unit	Mark	Name	
1	0.236	1219	349	0.000				
2	0.403	2727	600	0.000				
3	0.504	3353	700	0.000				
4	0.654	1351	161	0.000		V		
5	1.172	7962	612	0.000				
6	1.574	2890	820	0.000				
7	1.924	12650	3814	0.000				
8	2.032	1941147	569210	0.000		SV		
9	2.191	2411	854	0.000		T		
10	2.305	19197	5431	0.000		T		
Total		1994907	582552					

Detector A Channel 2 214nm								
Peak#	Ret. Time	Area	Height	Conc.	Unit	Mark	Name	
1	0.114	17674	5581	0.000				
2	0.237	117582	33850	0.000				
3	0.408	418596	120496	0.000				
4	0.504	369822	77459	0.000				
5	0.654	411885	52231	0.000		V		
6	0.791	1067344	101682	0.000		V		
7	1.222	1450003	66873	0.000		V		
8	2.035	4301184	445079	0.000		V		
9	2.304	359496	29131	0.000		V		

Peak#	Ret. Time	Area	Height	Conc.	Unit	Mark	Name
10	2.506	8831	3423	0.000		V	
Total		8522417	935804				

MS Chromatogram



Mass Spectrum

Line#:9 R.Time:----(Scan#:----)
 MassPeaks:370
 Spectrum Mode:Averaged 1.983-2.000(239-241) BasePeak:563(10225152)
 BG Mode:Calc Segment 1 - Event 1

